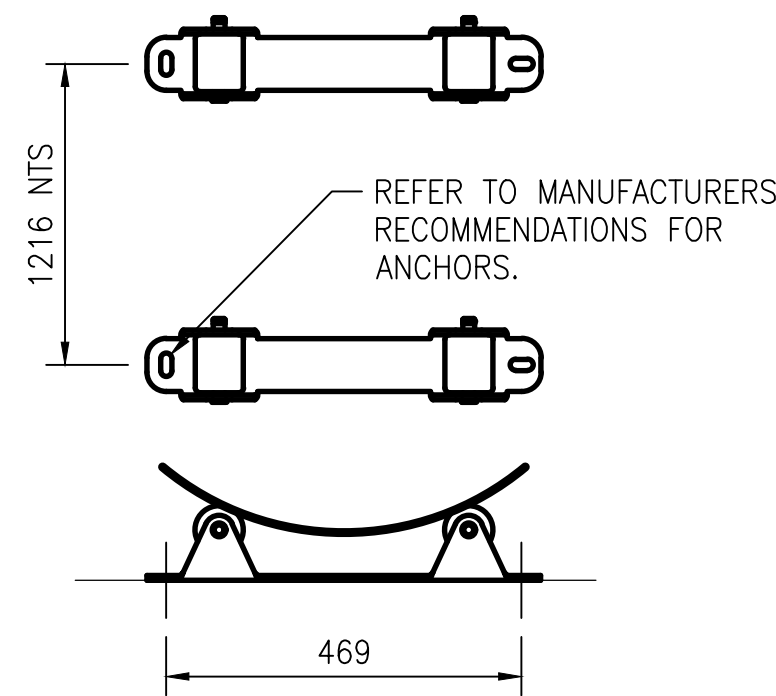
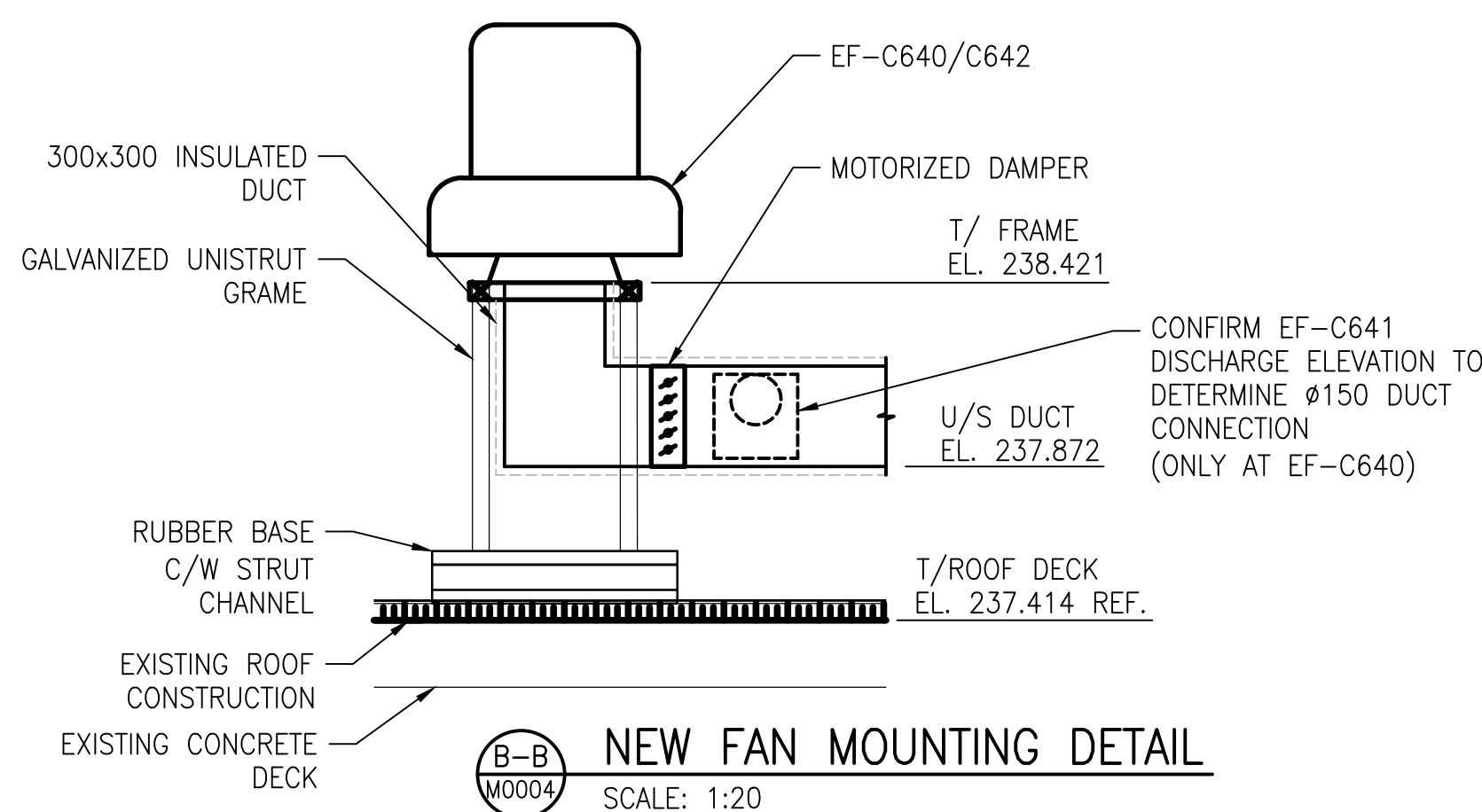


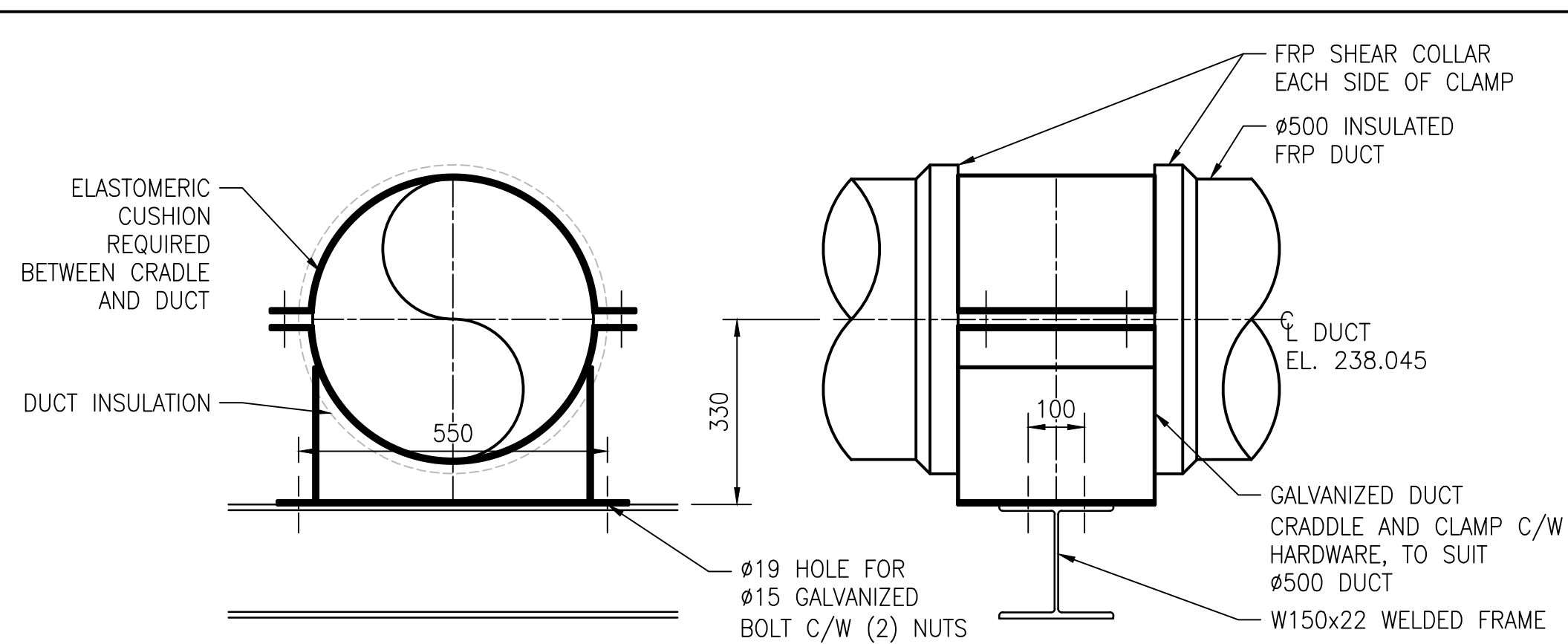
TRUNNION LAYOUT - NEW WORK
SCALE: 1:50



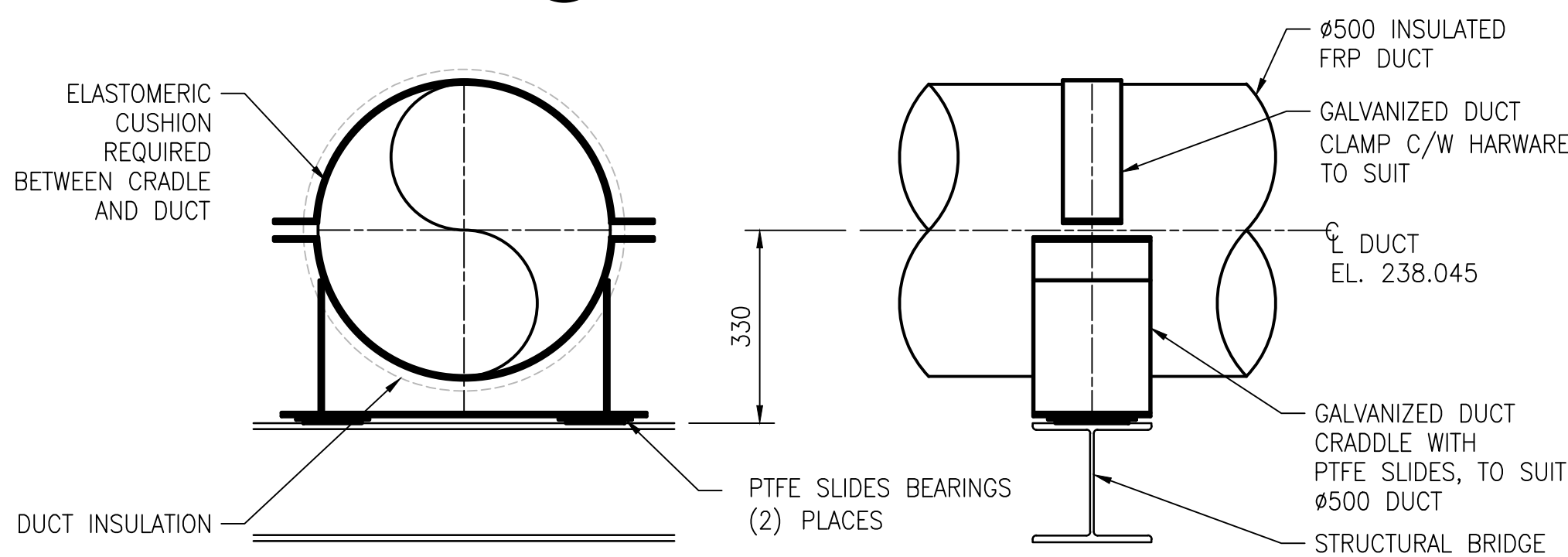
TRUNNION - DETAIL
SCALE: 1:10



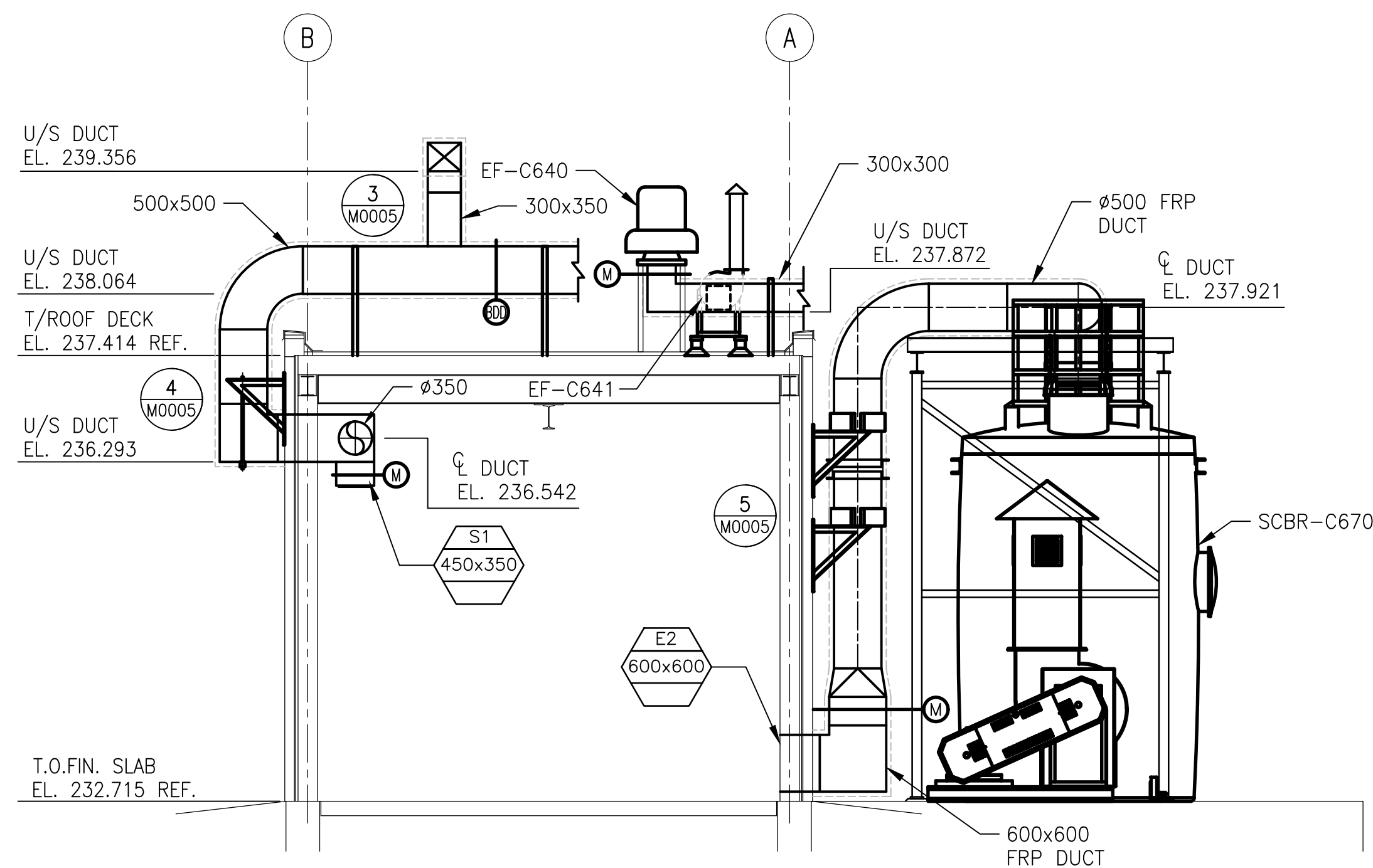
NEW FAN MOUNTING DETAIL
SCALE: 1:20



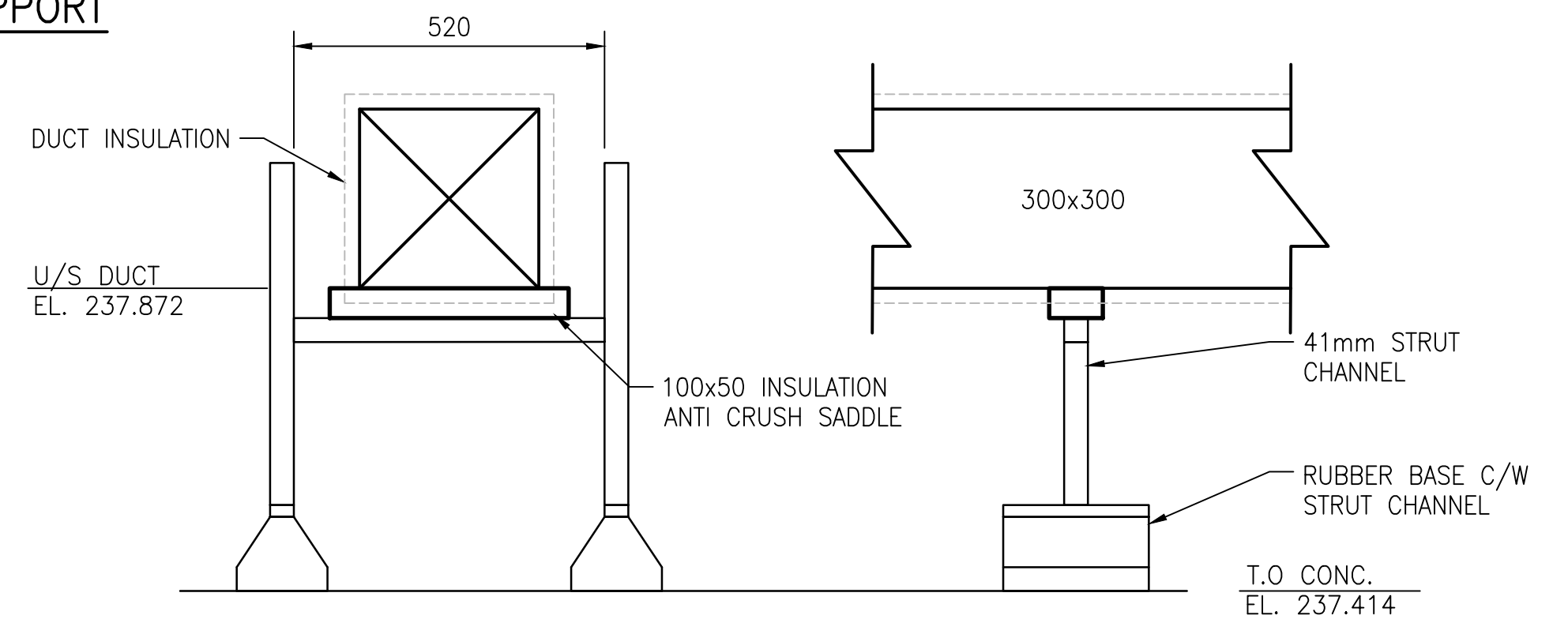
TYPE A1 PIPE ANCHOR
SCALE: 1:10



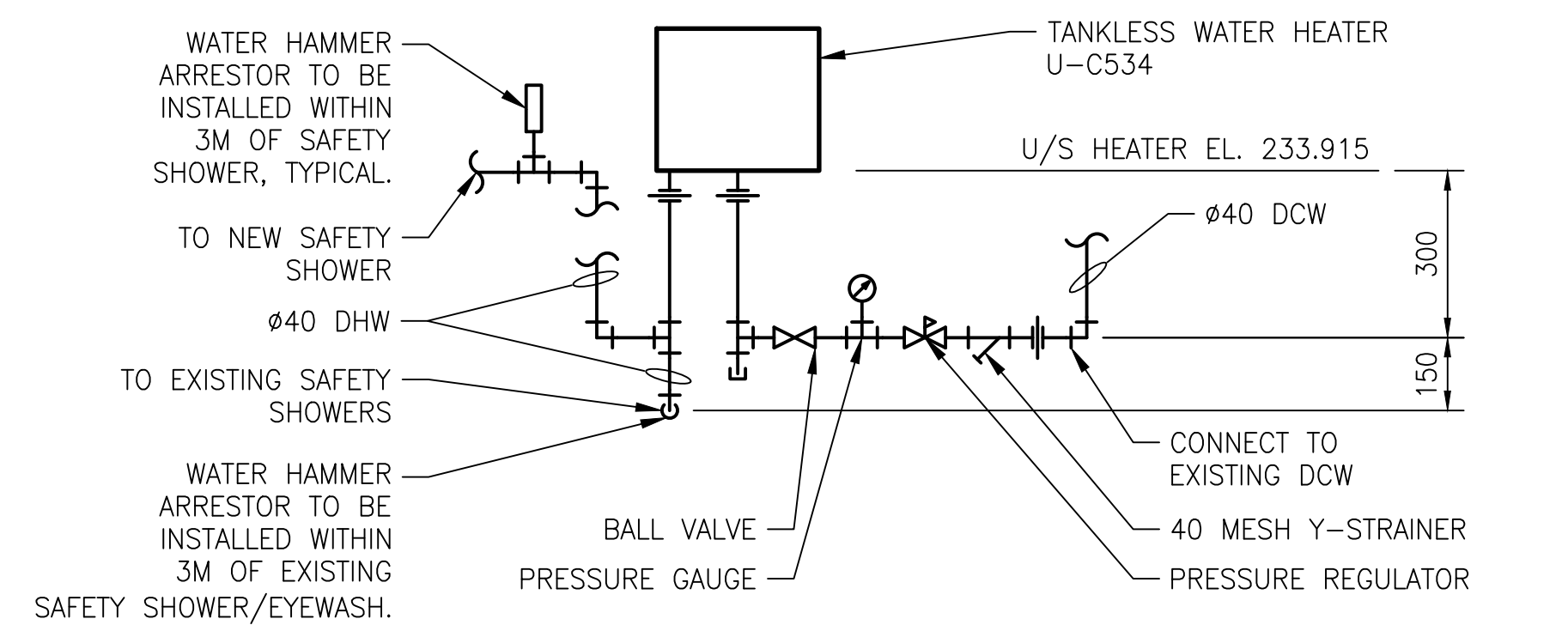
TYPE S1 PIPE SUPPORT
SCALE: 1:10



ELEVATION
SCALE: 1:50



TYPE S2 PIPE SUPPORT
SCALE: 1:10





TANKLESS WATER HEATER - PIPING DETAIL
SCALE: NTS

GENERAL NOTES

- DRAWING INFORMATION BASED ON HISTORICAL DRAWING AND SITE INVESTIGATIONS.
- INSULATION ON ALL EXISTING DOMESTIC WATER, FRESH AIR INTAKE, RAIN WATER LEADER, CONDENSATE AND DRAIN PIPE FITTINGS MAY CONTAIN ASBESTOS MATERIALS. REFER TO EXISTING ASBESTOS REPORTS TO CONFIRM.
- MASONRY BLOCK WALLS, CEILING OR WALL HARD PLASTERS AND CERAMIC FLOOR TILES MAY CONTAIN ASBESTOS.
- REFER TO M0002 FOR OCCUPIED, UN-OCCUPIED AND EMERGENCY VOLUMES SUPPLY AND EXHAUST DAMPERS.



					 148 Nature Park Way, Winnipeg, Manitoba Canada R3P 0X7 204-786-8080		ENGINEER'S SEAL		 THE CITY OF WINNIPEG WATER AND WASTE DEPARTMENT				
						MCPHILLIPS PUMPING STATION CHLORINE SYSTEM UPGRADE MECHANICAL NEW WORK PLAN, SECTION AND DETAILS							
00	ISSUED FOR TENDER AND CONSTRUCTION			2025/04/30	TS	SN	CONSULTANT NO.: 694715-3000-45DD-1004		CITY DRAWING NUMBER		SHEET	REV.	SIZE
NO.	REVISIONS			DATE	DESIGN	CHECK			1-0640C-M0004		001	00	A1